

BCTVCP Surveys - 1st Quarter

Field Name	County	Acres	January	February	March
Hillsides	Fresno	70,760	2 APCS + 2 PPA; 2x a month	2 APCS + 2 PPA; weekly	2 APCS + 2 PPA; weekly
Hillsides	Kings	14,820	1 APCS + 1 PPA; 2x a month	1 APCS + 1 PPA; weekly	1 APCS + 1 PPA; weekly
Hillsides	Kern	96,830	1 APCS + 2 PPA; 2x a month	1 APCS + 2 PPA; weekly	1 APCS + 2 PPA; weekly
Hillsides	Glenn	86,300	2 APCS + 2 PPA; 2x a month	2 APCS + 2 PPA; weekly	2 APCS + 2 PPA; weekly
Hillsides	Colusa	124,500			
Hillsides	Yolo	99,750			
Hillsides	Solano	31,550			
Hillsides	Merced	111,400	1 APCS + 1 PPA; 2x a month	1 APCS + 1 PPA; weekly	1 APCS + 1 PPA; weekly
Hillsides	San Joaquin	44,370			
Hillsides	Stanislaus	92,460			
Valley Floor	Fresno	223,800		2 APCS + 2 PPA; 1x a month*	2 APCS + 2 PPA; 2x a month*
Valley Floor	Kings	85,040		1 APCS + 1 PPA; 1x a month*	1 APCS + 1 PPA; 2x a month*
Valley Floor	Kern	320,700		1 APCS + 2 PPA; 1x a month*	1 APCS + 2 PPA; 2x a month*
Valley Floor	Glenn	86,430		2 APCS + 2 PPA; 1x a month*	2 APCS + 2 PPA; 2x a month*
Valley Floor	Colusa	121,500			
Valley Floor	Yolo	94,370			
Valley Floor	Solano	36,260			
Valley Floor	Merced	111,600		1 APCS + 1 PPA; 1x a month*	1 APCS + 1 PPA; 2x a month*
Valley Floor	San Joaquin	61,380			
Valley Floor	Stanislaus	89,340			
Valley Floor	Imperial	1,199,000	1 APCS + 2 PPAs**		
Valley Floor	Riverside	222,400			

Total Positions = 7 APCS; 8 PPA
 Positions Currently Filled = 4.5 APCS; 0 PPA
 Positions Needed = 2.5 APCS; 8 PPA

*The APCS + PPA assigned to each county would cover that county's Hillsides, Valley Floor, and Commodity surveys. They would not require doubling up all those positions.

**The Imperial and Riverside County surveys would be completed by one of the SJV APCS and two SJV PPAs. These would not require new positions unto themselves.

BCTVCP Surveys - 2nd Quarter

Field Name	County	Acres	April	May	June
Hillsides	Fresno	70,760	2 APCS + 2 PPA; weekly		
Hillsides	Kings	14,820	1 APCS + 1 PPA; weekly		
Hillsides	Kern	96,830	1 APCS + 2 PPA; weekly		
Hillsides	Glenn	86,300	2 APCS + 2 PPA; weekly		
Hillsides	Colusa	124,500			
Hillsides	Yolo	99,750			
Hillsides	Solano	31,550			
Hillsides	Merced	111,400	1 APCS + 1 PPA; weekly		
Hillsides	San Joaquin	44,370			
Hillsides	Stanislaus	92,460			
Valley Floor	Fresno	1,125,000	2 APCS + 2 PPA; weekly*	2 APCS + 2 PPA; weekly	2 APCS + 2 PPA; weekly
Valley Floor	Kings	572,000	1 APCS + 1 PPA; weekly*	1 APCS + 1 PPA; weekly	1 APCS + 1 PPA; weekly
Valley Floor	Kern	1,158,000	1 APCS + 2 PPA; weekly*	1 APCS + 2 PPA; weekly	1 APCS + 2 PPA; weekly
Valley Floor	Glenn	260,000	2 APCS + 2 PPA; weekly*	2 APCS + 2 PPA; weekly	2 APCS + 2 PPA; weekly
Valley Floor	Butte	181,300			
Valley Floor	Colusa	354,000			
Valley Floor	Sutter	294,000			
Valley Floor	Yolo	339,000			
Valley Floor	Sacramento	18,480			
Valley Floor	Solano	113,000			
Valley Floor	Madera	306,100	1 APCS + 1 PPA; weekly*	1 APCS + 1 PPA; weekly	1 APCS + 1 PPA; weekly
Valley Floor	Merced	602,000			
Valley Floor	San Joaquin	98,860			
Valley Floor	Stanislaus	254,000			
Valley Floor	Imperial	1,199,000			
Valley Floor	Riverside	222,400	1 APCS + 2 PPAs**		
Valley Floor	Monterey	413,000	1 APCS**		
Commodity Survey	Fresno	1,125,000		2 APCS + 2 PPA; weekly*	2 APCS + 2 PPA; weekly*
Commodity Survey	Kings	572,000		1 APCS + 1 PPA; weekly*	1 APCS + 1 PPA; weekly*
Commodity Survey	Kern	1,158,000		1 APCS + 2 PPA; weekly*	1 APCS + 2 PPA; weekly*
Commodity Survey	Glenn	260,000	2 APCS + 2 PPA; weekly*	2 APCS + 2 PPA; weekly*	2 APCS + 2 PPA; weekly*
Commodity Survey	Butte	181,300			
Commodity Survey	Colusa	354,000			
Commodity Survey	Sutter	294,000			
Commodity Survey	Yolo	339,000			
Commodity Survey	Sacramento	18,480			
Commodity Survey	Solano	113,000			
Commodity Survey	Madera	306,100	1 APCS + 1 PPA; weekly*	1 APCS + 1 PPA; weekly*	1 APCS + 1 PPA; weekly*
Commodity Survey	Merced	602,000			
Commodity Survey	San Joaquin	98,860			
Commodity Survey	Stanislaus	254,000			
Commodity Survey	Imperial	1,199,000			
Commodity Survey	Riverside	222,400	1 APCS + 2 PPAs**		
Commodity Survey	Monterey	413,000	1 APCS**		

Total Positions = 7 APCS; 8 PPA
 Positions Currently Filled = 4.5 APCS; 0 PPA
 Positions Needed = 2.5 APCS; 8 PPA

*The APCS + PPA assigned to each county would cover that county's Hillsides, Valley Floor, and Commodity surveys. They would not require doubling up all those positions.
 **The Imperial, Monterey, and Riverside County surveys would be completed by two of the SJV APCS and two SJV PPAs. These would not require new positions unto themselves.

BCTVCP Surveys - 3rd Quarter

Field Name	County	Acres	July	August	September
Valley Floor	Fresno	1,125,000	2 APCS + 2 PPA; weekly	2 APCS + 2 PPA; weekly	2 APCS + 2 PPA; weekly
Valley Floor	Kings	572,000	1 APCS + 1 PPA; weekly	1 APCS + 1 PPA; weekly	1 APCS + 1 PPA; weekly
Valley Floor	Kern	1,158,000	1 APCS + 2 PPA; weekly	1 APCS + 2 PPA; weekly	1 APCS + 2 PPA; weekly
Valley Floor	Glenn	260,000	2 APCS + 2 PPA; weekly	2 APCS + 2 PPA; weekly	2 APCS + 2 PPA; weekly
Valley Floor	Butte	181,300			
Valley Floor	Colusa	354,000			
Valley Floor	Sutter	294,000			
Valley Floor	Yolo	339,000			
Valley Floor	Sacramento	18,480			
Valley Floor	Solano	113,000			
Valley Floor	Madera	306,100			
Valley Floor	Merced	602,000	1 APCS + 1 PPA; weekly	1 APCS + 1 PPA; weekly	1 APCS + 1 PPA; weekly
Valley Floor	San Joaquin	98,860			
Valley Floor	Stanislaus	254,000			
Commodity Survey	Fresno	1,125,000	2 APCS + 2 PPA; weekly*	2 APCS + 2 PPA; weekly*	
Commodity Survey	Kings	572,000	1 APCS + 1 PPA; weekly*	1 APCS + 1 PPA; weekly*	
Commodity Survey	Kern	1,158,000	1 APCS + 2 PPA; weekly*	1 APCS + 2 PPA; weekly*	
Commodity Survey	Glenn	260,000	2 APCS + 2 PPA; weekly*	2 APCS + 2 PPA; weekly*	
Commodity Survey	Butte	181,300			
Commodity Survey	Colusa	354,000			
Commodity Survey	Sutter	294,000			
Commodity Survey	Yolo	339,000			
Commodity Survey	Sacramento	18,480			
Commodity Survey	Solano	113,000			
Commodity Survey	Madera	306,100			
Commodity Survey	Merced	602,000	1 APCS + 1 PPA; weekly*	1 APCS + 1 PPA; weekly*	
Commodity Survey	San Joaquin	98,860			
Commodity Survey	Stanislaus	254,000			

Total Positions = 7 APCS; 8 PPA
 Positions Currently Filled = 4.5 APCS; 0 PPA
 Positions Needed = 2.5 APCS; 8 PPA

*The APCS + PPA assigned to each county would cover that county's Hillsides, Valley Floor, and Commodity surveys. They would not require doubling up all those positions.

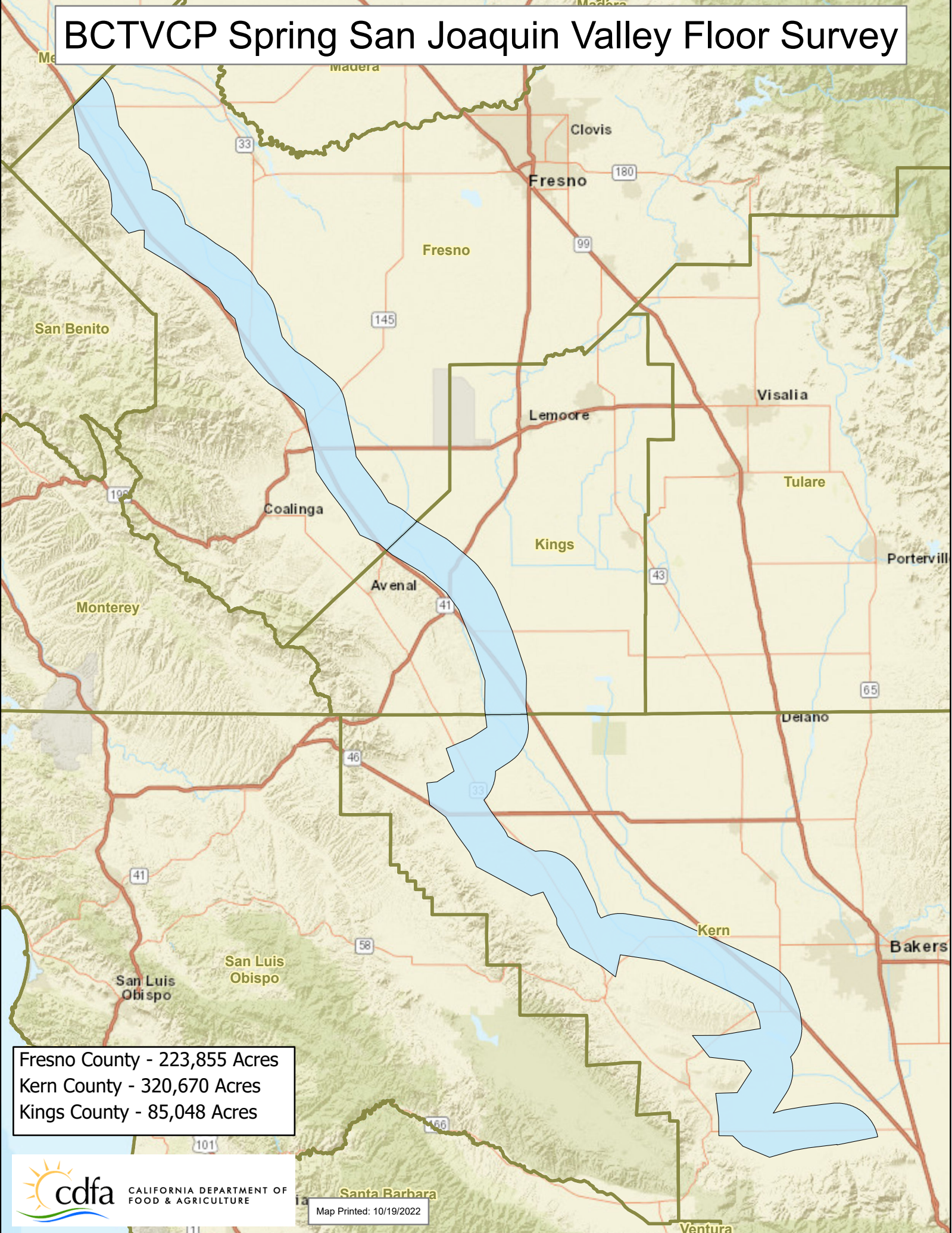
BCTVCP Surveys - 4th Quarter

Field Name	County	Acres	October	November	December
Hillsides	Fresno	70,760		2 APCS + 2 PPA; 1x a month	2 APCS + 2 PPA; 1x a month
Hillsides	Kings	14,820		1 APCS + 1 PPA; 1x a month	1 APCS + 1 PPA; 1x a month
Hillsides	Kern	96,830		1 APCS + 2 PPA; 1x a month	1 APCS + 2 PPA; 1x a month
Hillsides	Glenn	86,300		2 APCS + 2 PPA; 1x a month	2 APCS + 2 PPA; 1x a month
Hillsides	Colusa	124,500			
Hillsides	Yolo	99,750			
Hillsides	Solano	31,550			
Hillsides	Merced	111,400		1 APCS + 1 PPA; 1x a month	1 APCS + 1 PPA; 1x a month
Hillsides	San Joaquin	44,370			
Hillsides	Stanislaus	92,460			
Valley Floor	Fresno	1,125,000	2 APCS + 2 PPA; weekly	2 APCS + 2 PPA; weekly*	
Valley Floor	Kings	572,000	1 APCS + 1 PPA; weekly	1 APCS + 1 PPA; weekly*	
Valley Floor	Kern	1,158,000	1 APCS + 2 PPA; weekly	1 APCS + 2 PPA; weekly*	
Valley Floor	Glenn	260,000	2 APCS + 1 PPA; weekly	2 APCS + 1 PPA; weekly*	
Valley Floor	Butte	181,300			
Valley Floor	Colusa	354,000			
Valley Floor	Sutter	294,000			
Valley Floor	Yolo	339,000			
Valley Floor	Sacramento	18,480			
Valley Floor	Solano	113,000			
Valley Floor	Madera	306,100	1 APCS + 1 PPA; weekly	1 APCS + 1 PPA; weekly*	
Valley Floor	Merced	602,000			
Valley Floor	San Joaquin	98,860			
Valley Floor	Stanislaus	254,000			
Valley Floor	Imperial	1,199,000	APCS + 2 PPAs**		
Valley Floor	Riverside	222,400			

Total Positions = 7 APCS; 8 PPA
 Positions Currently Filled = 4.5 APCS; 0 PPA
 Positions Needed = 2.5 APCS; 8 PPA

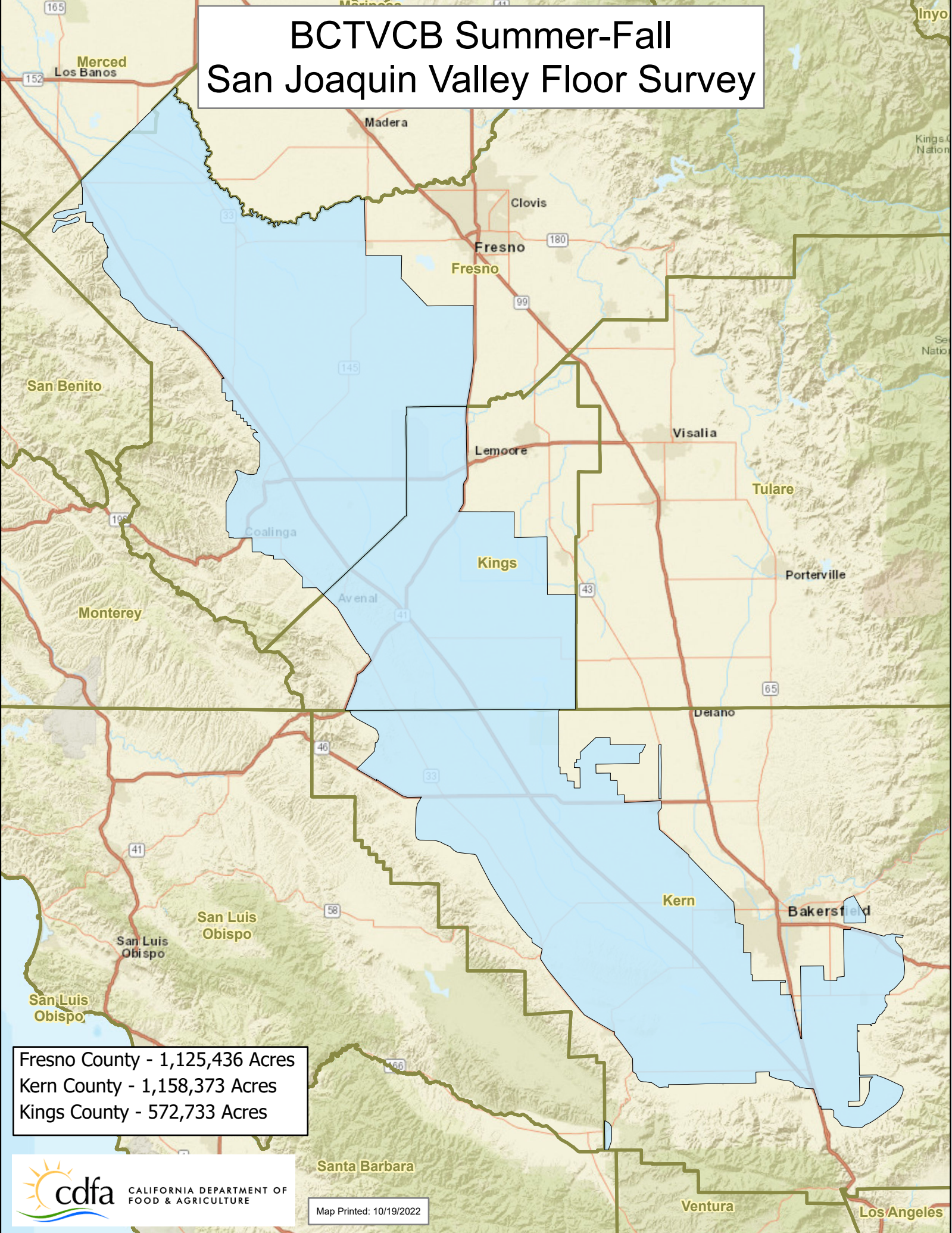
*The APCS + PPA assigned to each county would cover that county's Hillsides, Valley Floor, and Commodity surveys. They would not require doubling up all those positions.
 **The Imperial and Riverside County surveys would be completed by one of the SJV APCS and two SJV PPAs. These would not require new positions unto themselves.

BCTVCP Spring San Joaquin Valley Floor Survey



Fresno County - 223,855 Acres
Kern County - 320,670 Acres
Kings County - 85,048 Acres

BCTVCB Summer-Fall San Joaquin Valley Floor Survey



Fresno County - 1,125,436 Acres
Kern County - 1,158,373 Acres
Kings County - 572,733 Acres